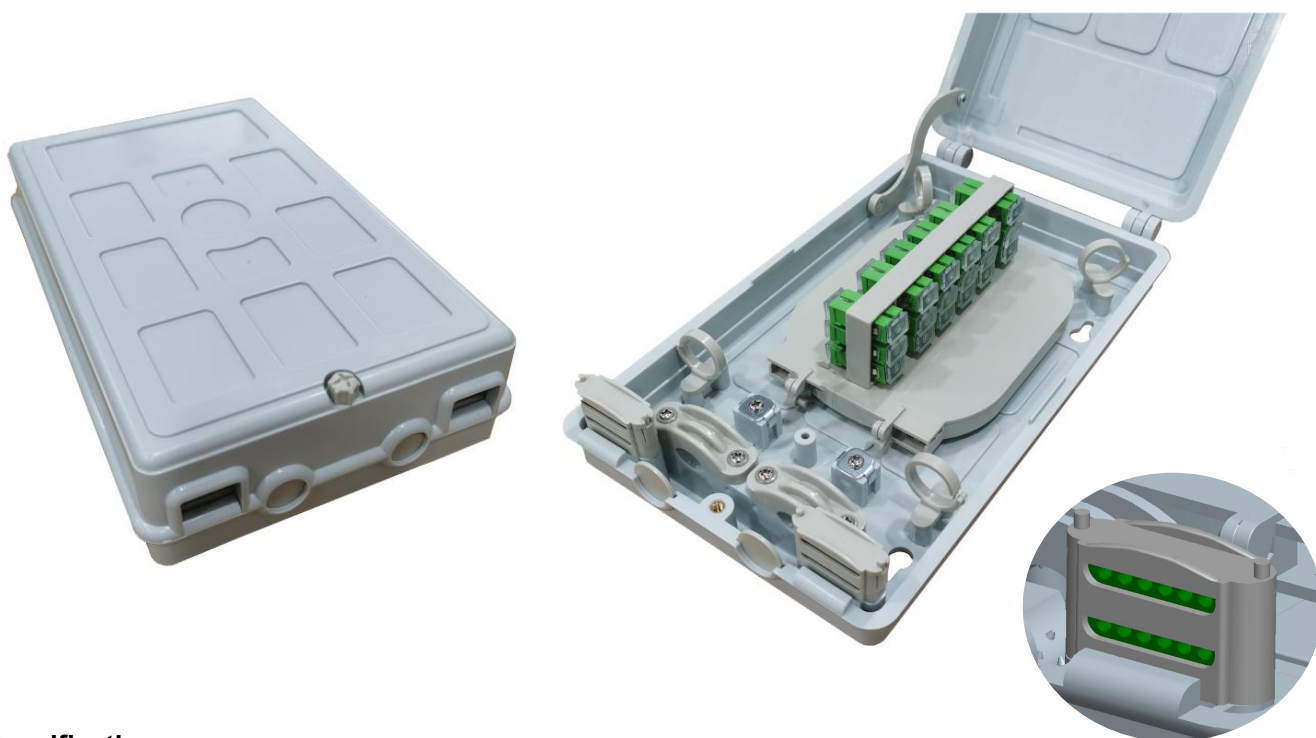


GP-T449-18P

Indoor FTTH Termination Box

Applications

- Applicable for the FTTH project, provide mechanical protection for fiber management system, including the functions of splicing, and fiber retention.
- Suitable for indoor wall-mounting or cabinet.



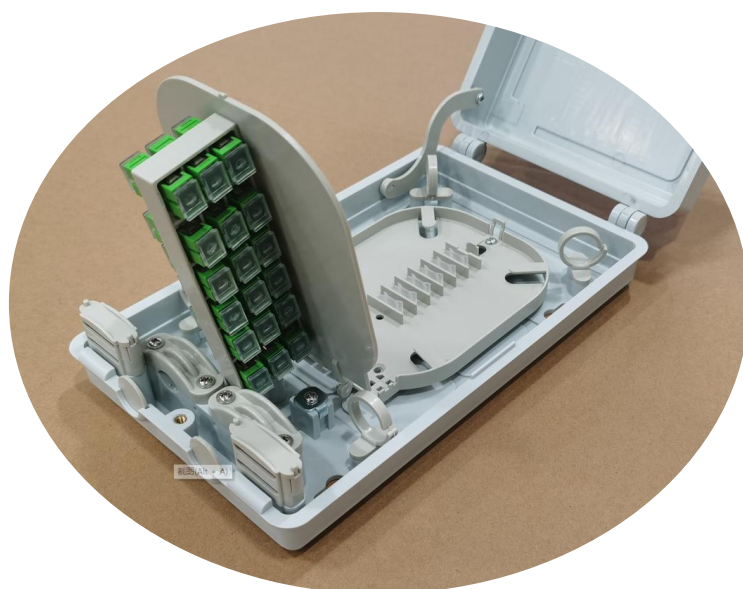
Specifications

Part No.	GP-T449-18P
Dimension	265×153×55mm
Main Cable Port & Cable Diameter	2×Φ16mm (Max.)
Drop Cable Ports	2×12×Φ3mm
Splice Capacity of Each Tray	6/12 FO
Adapter Support	18 SC
Lock Type	Screw Lock

· Features & Benefits

1. High-strength, ultra-high-viscosity plastic, beautiful appearance, strong and durable.
2. Accommodates fiber optic cable fixing components, strength core fixing components, routing ring.
3. Fiber optic splice tray adopts stacks structure, and can flip over 90° when opening, easy to install and maintenance.
4. Grounding available.
5. Sufficient room for fiber retention.
6. Optical cable, optical fiber bending, storage radius greater than: >30mm.

· Splice tray



· Accessories

